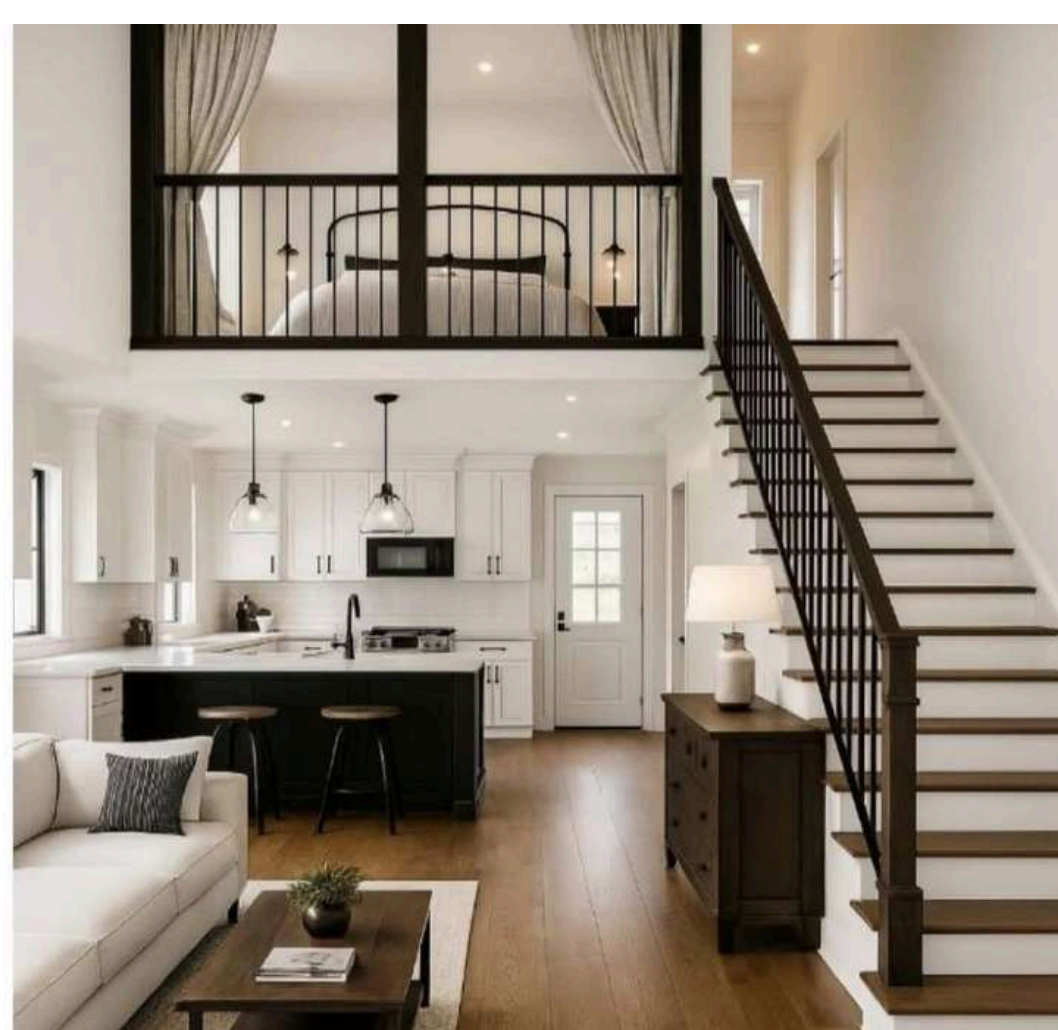


*a space filled with warmth,
comfort, and belonging, where
hearts are safe, laughter echoes,
and memories are made, more than
a place - it's a feeling of being truly loved.*



ELEVATION TYPE : MODERN ARCHITECTURE (OR MODERNISM)

is a 20th-century movement that rejected historical ornamentation in favor of minimalism, functionalism, and new industrial materials like steel, glass, and reinforced concrete. Guided by the principle that "form follows function," it prioritized open spaces and structural honesty.

Every structural element must serve a distinct purpose, decorative, non-essential flourishes are completely eliminated.

DESIGN EXHIBITS heavy use of glass curtain walls, exposed steel frames, and smooth poured concrete. Characterized by flat roofs, straight lines, asymmetrical compositions, and simple cubic volumes. Emphasizes open, flowing floor plans that connect the building's interior with the natural environment.



A gathering place for family to join together in laughter. The one place you will always be surrounded by those who love you. A place or feeling of belonging.

ELEVATION TYPE : MODERN ARCHITECTURE (OR MODERNISM)

is a 20th-century movement that rejected historical ornamentation in favor of minimalism, functionalism, and new industrial materials like steel, glass, and reinforced concrete. Guided by the principle that "form follows function," it prioritized open spaces and structural honesty.

Every structural element must serve a distinct purpose, decorative, non-essential flourishes are completely eliminated.

DESIGN EXHIBITS heavy use of glass curtain walls, exposed steel frames, and smooth poured concrete. Characterized by flat roofs, straight lines, asymmetrical compositions, and simple cubic volumes. Emphasizes open, flowing floor plans that connect the building's interior with the natural environment.



NEW HOME BLESSING

AS YOUR FEET WALK
THROUGH THE DOOR,
MAY YOUR HEART FEEL SETTLED.



MAY LOVE AND LAUGHTER
SWIRL THROUGH EVERY ROOM.
MAY GOALS AND DREAMS
BE ARTICULATED AND CELEBRATED

WITHIN THESE WALLS.

MAY REST AND SWEET DREAMS
BE A NIGHTLY BLESSING.

MAY THIS HOME ALWAYS BE A
HAVEN FOR YOUR SOUL

ABOUT ELEVATION

Minimalist Kerala architecture blends the state's tropical vernacular with modern, clean-lined design. By stripping away heavy ornamentation, it focuses on elemental fundamentals: natural light, cross-ventilation, and local, sustainable materials like exposed brick, laterite stone, Strategic pergolas, large windows, and open layouts allow sunlight and wind to naturally animate the home throughout the day.



Mother Nature is the ultimate inspiration. When you're feeling sluggish, simply walking outside and getting some fresh air can do wonders for your mood and outlook. Often, nature's beauty can take your breath (and words) away. In those moments of awe, we like to turn to some of our favorite nature

ABOUT ELEVATION

MINIMALIST ARCHITECTURE

Minimalist architecture is a design philosophy that distills buildings to their essential functions, stripping away superfluous ornamentation. Rooted in the Bauhaus movement and traditional Japanese design, it prioritizes clean lines, open floor plans, abundant natural light, and a limited palette of materials like glass, steel, and concrete



"The tree which moves some to tears of joy is in the eyes of others only a green thing which stands in the way. Some see nature all ridicule and deformity, and by these I shall not regulate my propositions. And some see no nature at all. But to the eyes of the man of imagination, nature is imagination itself."

ABOUT ELEVATION

MINIMALIST KERALIAN ARCHITECTURE

Minimalist Kerala architecture blends the state's tropical vernacular with modern, clean-lined design. By stripping away heavy ornamentation, it focuses on elemental fundamentals: natural light, cross-ventilation, and local, sustainable materials like exposed brick, laterite stone, Strategic pergolas, large windows, and open layouts allow sunlight and wind to naturally animate the home throughout the day.



"Rest is not idleness, and to lie sometimes on the grass under trees on a summer's day, listening to the murmur of the water, or watching the clouds float across the sky, is by no means a waste of time."

ABOUT ELEVATION

TRADITIONAL KERALIAN ARCHITECTURE

Kerala's traditional architecture is a climate-responsive vernacular style blending Vastu Shastra with local, natural materials. Its defining features include steep sloping roofs, central courtyards, and extensive woodwork. These elements naturally cool the home and handle heavy monsoon rains.



"Fresh air is as good for the mind as for the body. Nature always seems trying to talk to us as if she had some great secret to tell. And so she has."

ABOUT ELEVATION

MINIMALIST CONTEMPORARY ARCHITECTURE

Contemporary minimalist architecture strips buildings down to their essential elements, emphasizing clean lines, geometric strictness, and open spaces. By eliminating unnecessary ornamentation, it elevates natural light, tactile materials, and the surrounding landscape into the primary decorative features.

In minimalist design, light itself acts as an architectural material. Expansive, floor-to-ceiling glass windows flood interiors with daylight while reducing the visual boundary between indoor and outdoor spaces. This technique makes even compact spaces feel vast, serene, and connected to the environment.



"There is something infinitely healing in the repeated refrains of nature—the assurance that dawn comes after night, and spring after the winter."

ABOUT ELEVATION

MINIMALIST KERALIAN ARCHITECTURE

Minimalist Kerala architecture blends the state's tropical vernacular with modern, clean-lined design. By stripping away heavy ornamentation, it focuses on elemental fundamentals: natural light, cross-ventilation, and local, sustainable materials like exposed brick, laterite stone, Strategic pergolas, large windows, and open layouts allow sunlight and wind to naturally animate the home throughout the day.

"Spring is nature's way of saying, 'Let's party!'"

ABOUT ELEVATION

MINIMALIST CONTEMPORARY ARCHITECTURE

Contemporary minimalist architecture strips buildings down to their essential elements, emphasizing clean lines, geometric strictness, and open spaces. By eliminating unnecessary ornamentation, it elevates natural light, tactile materials, and the surrounding landscape into the primary decorative features.

In minimalist design, light itself acts as an architectural material. Expansive, floor-to-ceiling glass windows flood interiors with daylight while reducing the visual boundary between indoor and outdoor spaces. This technique makes even compact spaces feel vast, serene, and connected to the environment.





ABOUT ELEVATION

TRADITIONAL KERELIAN ARCHITECTURE

Kerala's traditional architecture is a climate-responsive vernacular style blending Vastu Shastra with local, natural materials. Its defining features include steep sloping roofs, central courtyards, and extensive woodwork. These elements naturally cool the home and handle heavy monsoon rains.

TRIPLEX SPECIALIZED FOR SMALL AREAS



"A house is made of bricks and beams. A home is made of hopes and dreams."

ABOUT ELEVATION

MINIMALIST CONTEMPORARY ARCHITECTURE

Contemporary architecture refers to the buildings and design trends of the 21st century. Rather than a single style, it is a diverse collection of approaches that prioritize sustainability, advanced technology, and unconventional forms. It breaks away from rigid historical traditions to reflect modern cultural and environmental needs.



When we think of home, we don't just think of a house. We think of all the things within our house that make us feel cozy, warm, and loved.

ABOUT ELEVATION

HERITAGE CLASSIC 18TH CENTURY ARCHITECTURE

Classic old mansion architecture is defined by grand scales, intricate handcrafted details, and specific historical design movements spanning the 18th to the early 20th centuries. These historic estates reflect distinct cultural eras through their striking exterior silhouettes and opulent floor plans.





Give me a quiet life.
One where I can
hear the trees
rustling in the wind,
raindrops on the
windows, pages of a
book being turned,
coffee being
brewed, and the
heartbeats of the
ones I love.

ABOUT ELEVATION

MINIMALIST CONTEMPORARY ARCHITECTURE

Contemporary architecture refers to the buildings and design trends of the 21st century. Rather than a single style, it is a diverse collection of approaches that prioritize sustainability, advanced technology, and unconventional forms. It breaks away from rigid historical traditions to reflect modern cultural and environmental needs.